

**Timetable**

Bus stop	What's near your stop?	30 March - 3 November 2018
1	<b>Waverley Bridge</b> Scott Monument, Balmoral Hotel, Princes Street, VisitScotland Edinburgh iCentre	<b>0905</b> then every 15 mins until <b>1750</b>
2	<b>Canonmills</b> Water of Leith, Stockbridge	<b>0912</b> then every 15 mins until <b>1757</b>
3	<b>Royal Botanic Garden Edinburgh</b> Royal Botanic Garden Edinburgh (west gate), The Glasshouses	<b>0917</b> then every 15 mins until <b>1802</b>
4	<b>Ferry Road</b> Great photo opportunity of city skyline	<b>0919</b> then every 15 mins until <b>1804</b>
5	<b>Newhaven Harbour</b> Views over the Firth of Forth across to Fife, Newhaven Cruise Arrival point	<b>0853, 0908, 0926</b> then every 15 mins until <b>1811</b>
6	<b>Cruise Terminal</b> Leith Cruise Terminal	<b>0859, 0914, 0932</b> then every 15 mins until <b>1817</b>
7	<b>Ocean Terminal</b> Shopping Centre & Cinema (Ocean Terminal), The Royal Yacht Britannia	<b>0901, 0916, 0934</b> then every 15 mins until <b>1819</b>
8	<b>Great Junction Street</b> Short walk to The Shore for cafés and restaurants, James Pringle - Leith Mills	<b>0909, 0924, 0942</b> then every 15 mins until <b>1827</b>
9	<b>Elm Row</b> Edinburgh Playhouse Theatre, restaurants	<b>0914, 0929, 0947</b> then every 15 mins until <b>1832</b>
10	<b>Holyrood</b> Palace of Holyroodhouse, Queen's Gallery, Scottish Parliament, Arthur's Seat	<b>0920, 0935, 0953</b> then every 15 mins until <b>1838</b>
11	<b>Canongate</b> Museum of Edinburgh, Royal Mile, Canongate Kirk, The People's Story	<b>0932, 0947, 1005</b> then every 15 mins until <b>1850</b>
12	<b>John Knox House</b> Museum of Childhood, World's End, Royal Mile, Scottish Storytelling Centre	<b>0936, 0951, 1009</b> then every 15 mins until <b>1854</b>
13	<b>Market Street</b> Waverley Railway Station, Lothian Travelshop, The Edinburgh Dungeon	

Tour continues back to Waverley Bridge

The full tour lasts up to 75 minutes. You can hop on and hop off for the duration of your ticket. Please note that some later tours will terminate at Market Street - please ask your driver.

Welcome to **Edinburgh**

The Royal Yacht Britannia opening hours:

	first admission	last admission
April - September	9.30	16.30
October	9.30	16.00
November	10.00	15.30



Share your adventure

Tell everyone about your Edinburgh Bus Tours experience and the attractions you've seen! We'd love to see your sightseeing photos.

Use our free on board Wi-Fi to stay connected on the go

@edinburghtour Edinburgh Bus Tours edinburghbustours



Hop off at stop 3 to visit the beautiful **Royal Botanic Garden Edinburgh** - don't forget to use your 2 for 1 discount at the Glasshouses



Hop off at stop 7 to visit the **The Royal Yacht Britannia** with 10% off entry with your tour ticket



Hop off at stop 10 to visit the **The Queen's Palace of Holyroodhouse**

Please spare a moment to leave us a review at [edinburghtour.com/reviews](http://edinburghtour.com/reviews)



Discounts with your ticket

Hop on - Hop off to make the most of these fantastic offers!

**The Edinburgh Dungeon** 15 min  
£5 off entrance (excludes 26 - 31st October 2018)  
ALSO ON CITYSIGHTSEEING EDINBURGH AND EDINBURGH TOUR ROUTES

**James Pringle, Leith Mills** 8 min  
10% off clothing including cashmere

**O'Brien's Irish Sandwich Bar, Ocean Terminal** 7 min  
10% off all purchases

**Palace of Holyroodhouse** 10 min  
Show your bus tour ticket at the Palace Café till to receive a free crown shortbread when you purchase any hot drink  
ALSO ON CITYSIGHTSEEING EDINBURGH AND EDINBURGH TOUR ROUTES

**Parliament Café at the Scottish Parliament** 10 min  
10% discount  
ALSO ON CITYSIGHTSEEING EDINBURGH AND EDINBURGH TOUR ROUTES

**The Real Mary King's Close** 12 min  
£1 off adult ticket before 1pm  
ALSO ON CITYSIGHTSEEING EDINBURGH AND EDINBURGH TOUR ROUTES

**Royal Botanic Garden Edinburgh** 3 min  
2 for 1 entry into The Glasshouses

**The Royal Yacht Britannia** 7 min  
10% off admission price

Discounts available further afield

**Edinburgh Butterfly & Insect World**  
£1.50 off an adult ticket  
LOTHIAN BUS SERVICE 3, 29

**National Mining Museum Scotland**  
£1 off an adult ticket  
LOTHIAN BUS SERVICE 29, 33

**Prestonfield Taste of Scotland Show & Dinner**  
£10 off per person on dinner and show ticket  
LOTHIAN BUS SERVICE 2, 14, 30

Attraction tickets available

Buy your tickets from **Edinburgh Bus Tours Ticket Sellers on Waverley Bridge** or your **Tour Driver**.

**Edinburgh Castle** 12 min  
Guaranteed fast track tickets - no time slot required

**The Edinburgh Dungeon** 13 min  
Discounted tickets

**Dynamic Earth** 10 min  
Discounted tickets





# Use your tour ticket for 2 for 1 Entry

to the magnificent Glasshouses at the Royal Botanic Garden Edinburgh, home to one of the world's largest plant collections

Admission: Adult £6.50 | Concession £5.50

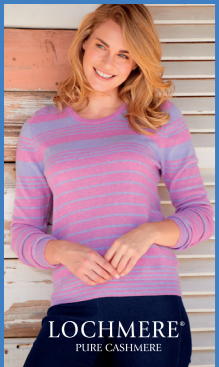
Includes a small voluntary donation to the Garden

Children under 16 go free

Entry to the Garden is free

Hop off at stop 3 2 min

JAMES PRINGLE SHOPPING WAREHOUSE LEITH MILLS, EDINBURGH



RECEIVE 10% OFF\* ON PRODUCTION OF YOUR EDINBURGH BUS TOURS TICKET

\*Any spend on EWM clothing, including cashmere



Scottish Gifts & Souvenirs • Ladies & Men's Fashions • Cashmere & Knitwear • Outdoor Clothing • Shoe Department • Lingerie • Jewellery • Perfume • Whisky Shop • Homeware & Textiles • Cookshop • Licensed Restaurant

Only 2 minutes drive from Britannia or 2 minutes walk from Stop 8 on the Majestic Route  
Leith Mills, 70/74 Bangor Road, Leith, Edinburgh, EH6 5JU  
Tel 0131 553 5161

Hop off at stop 8 2 min

## The Royal Edinburgh Ticket

VISIT EDINBURGH'S MUST-SEE ATTRACTIONS

Edinburgh Castle  
The Royal Yacht Britannia  
Palace of Holyroodhouse



Your FAST TRACK ticket to explore three majestic jewels in the crown of Scotland's capital

Save over 20% with your 48 hour ticket including:

Fast track entry into: Edinburgh Castle  
The Royal Yacht Britannia • Palace of Holyroodhouse  
and 48 hours travel on:

EDINBURGH BUS TOURS



Adult £55  
Senior (60+)/Student £48  
Child (5-15 years) £30

royaledinburghticket.co.uk

## Majestic Tour ticket prices

	Adult	Senior (age 60+) & Student	Child (age 5-15)	Family (2 adults & up to 3 children)
<b>MAJESTIC TOUR</b> 24 hour valid ticket	£15	£14	£7.50	£36

## Multi-tour ticket prices

Make the most of your visit - see the whole city with Edinburgh Bus Tours.

	Adult	Senior (age 60+) & Student	Child (age 5-15)	Family (2 adults & up to 3 children)
<b>The Grand 24 ticket</b> 24 hours on 3 City Tours	£20	£18	£10	£49
<b>The Grand 48 ticket</b> 48 hours on 3 City Tours	£22	£20	£11	£54

	Adult	Senior (age 60+) & Student	Child (age 5-15)	Family (2 adults & up to 3 children)
<b>The Grand 48+ ticket</b> 48 hours on all 3 City Tours PLUS a 3 Bridges Bus & Boat Tour	£32	£30	£16	£79

**The Royal Edinburgh Ticket**

Includes entry to 3 attractions!

Your ticket includes:  
 48 hours on all 3 City Tours  
 Fast track entry into:  
 Edinburgh Castle • The Royal Yacht Britannia • Palace of Holyroodhouse

Adult £55  
Senior (60+)/Student £48  
Child (5-15 years) £30

Children under 5 years travel FREE (maximum 2 per paying adult)  
Group discounts available in advance, please call 0131 556 2244 for details (minimum 10 people or minimum 15 people for The Royal Edinburgh Ticket).  
Point to Point fares also available (bus only).

Buy your tickets from... Edinburgh Bus Tours Ticket Sellers on Waverley Bridge, Tour Drivers, Lothian Travelshops or buy print@home tickets at edinburghtour.com  
For more information please call 0131 220 0770 or email hello@edinburghtour.com

Edinburgh Bus Tours operates all year round

All information in this guide is shown for guidance - Edinburgh Bus Tours cannot accept any liability arising from inaccuracies or changes. We advise customers check details before travelling at edinburghtour.com. Tour fares do not include entrance to attractions (except Royal Edinburgh Ticket). On occasion due to circumstances beyond our control/ special events, our services can be delayed or rerouted.

## 5 top tour tips

Top tips to help you make the most of your Majestic Tour experience.

- Take a complete tour first, then use our tours to hop on and off at the places you choose to visit around the city. Our best value Grand and Royal tickets allow you to use all three City Tours for 24 or 48 hours - just ask your driver to upgrade.
- Hop off for a relaxing walk around the Royal Botanic Garden Edinburgh 2 min - it's FREE. Show your tour ticket to get 2 for 1 Entry to their Glasshouses too.
- Have your camera ready along Ferry Road 4 for the best panoramic view of the city! Share your tour pics with us on Facebook, Twitter or Instagram.
- Enjoying the view from Newhaven Harbour 5 ... Upgrade to our Grand48+ and get a closer look at the Forth Bridges with our 3 Bridges Tour.
- Hop off and visit The Royal Yacht Britannia 2 min - admission is included in our ROYAL ticket or receive 10% off with your Majestic Tour ticket.

## Finding us

You'll find us at Waverley Bridge, just off Princes Street. Our specially trained team can help you choose the best ticket to make the most of your time in Edinburgh.



Waverley Bridge is served by many local bus routes, including our frequent, express airport service Airlink 100. Please visit [www.lothianbuses.co.uk](http://www.lothianbuses.co.uk) for details.

EDINBURGH BUS TOURS



edinburghtour.com

@edinburghtour Edinburgh Bus Tours edinburghbustours

## Amazing memories start here



# MAJESTIC TOUR

30 March - 3 November 2018



## We go to...

- GEORGIAN NEW TOWN
- ROYAL BOTANIC GARDEN EDINBURGH
- NEWHAVEN AND LEITH CRUISE ARRIVAL POINTS
- THE ROYAL YACHT BRITANNIA
- PALACE OF HOLYROODHOUSE
- SCOTTISH PARLIAMENT
- OLD TOWN & ROYAL MILE

Multi-language commentary

HOP ON HOP OFF

Class 2 Easy access for all

Green Tourism Gold Award Scottish Tourism Exceptional

EDINBURGH BUS TOURS

